

S E R V I C E N O T E

SUPERSEDES: NONE

HP 37714A PDH/SDH/Jitter Test Set**Serial Numbers:** 3339U00100/3339U09999**Build Status:**

Below 1:18 (or units that have been retrofitted with UKJ or a replacement SPDH Rx [37717-60004] since FEB 1997)

Signal Loss LED flickering**To be Performed by:** Qualified Service Personnel**Parts Required:** Wire link**Situation**

The SIGNAL LOSS, LED can be seen to be flickering in units that are fully loaded with options UH1, A1T, UKJ, switched on, and with no cables connected.

Solution/Action

Add a wire link between ground pin on J2 and test point as shown in Figures 1 and 2.

DATE: July 1998

ADMINISTRATIVE INFORMATION

SERVICE NOTE CLASSIFICATION:

MODIFICATION RECOMMENDED

ACTION CATEGORY:	IMMEDIATELY ON SPECIFIED FAILURE AGREEABLE TIME	STANDARDS:	LABOR 0.5 Hours	
LOCATION CATEGORY:	CUSTOMER INSTALLABLE ON-SITE HP LOCATION	SERVICE INVENTORY:	RETURN SCRAP SEE TEXT	USED PARTS: RETURN SCRAP SEE TEXT
AVAILABILITY:	PRODUCT'S SUPPORT LIFE	HP RESPONSIBLE UNTIL: July 1999		
AUTHOR: DBG	ENTITY: E610	ADDITIONAL INFORMATION:		

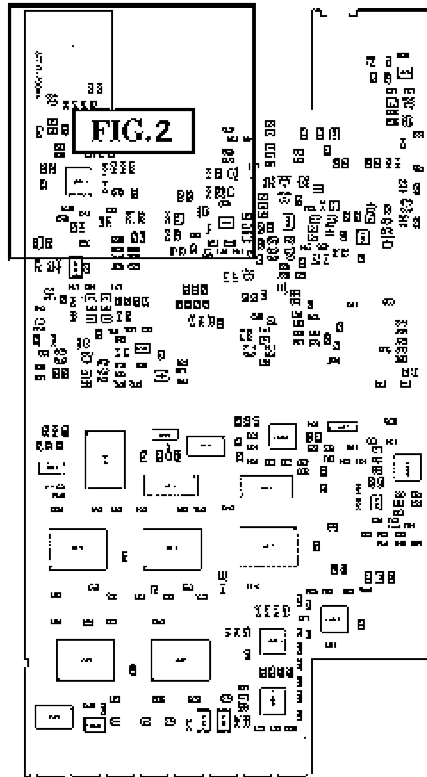


Figure 1

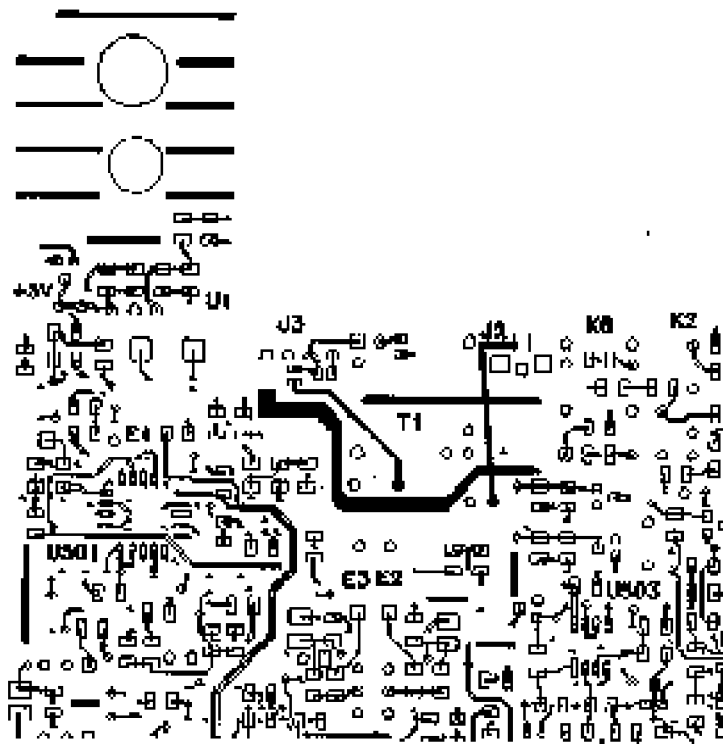


FIG. 2